



GAZİANTEP MAKİNA İMALAT SAN. TİC. A.Ş.

MI-PAN STEAMING LINES

PRODUCT CATALOGUE

2026

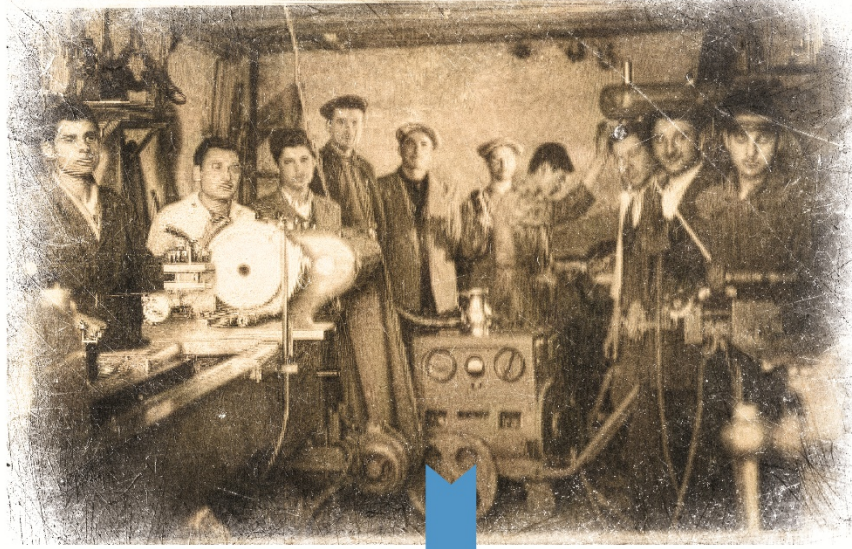


[www.mitasmakina.com](http://www.mitasmakina.com)



[mitas@mitasmakina.com](mailto:mitas@mitasmakina.com)

© 2026 MiTAŞ Machine Inc. All rights reserved.

**1949**

**MİTAŞ Machine Inc.** was founded in 1949 through the initiatives of İhsan UNCU.

By providing services in many branches of the manufacturing sector, like defense industry, automotive industry, textile industry, etc. It has increased experience and knowledge.

**MİTAŞ Machine Inc.**, by giving continuous importance to research and development , has evolved into a modern, technologically advanced business suited to our times.

Now We are proud to serve the textile machinery manufacturing sector with our high technology workshop and expert staff.

**2026**

## MI-PAN STEAMING LINES

Heat-Set Solutions For Staple Fiber Yarns



Steam blocking is the best way to permanently set the shape and soften scratchy Acrylic, Wool and Cotton yarns. Because acrylic is a plastic, the heat of the steam slightly relaxes the fibers.

When the steam condenses on the cooler textile, it releases its latent heat of vaporization, providing extremely uniform, bulk heating throughout the fabric or yarn package

The Steam temporarily exceeds the fiber's glass transition temperature, relieving internal stress so the fiber settles into its new, relaxed molecular structure.



MI-PAN Series Steaming lines have a modular structure. This structure allows for the creation of the best possible machine configuration to meet customer needs.

### MI-C CREEL

It features an ergonomic design for easy and quick coil changes. The housing is robust enough to support coils weighing up to 8kg.

- Up to 96 ends
- Active and reserve tubes adaptors
- Singel or dobbel line configuration
- Yarn detection sensors for each end
- Yarn tension device for each end



### MI-L LAYING UNIT

It is designed to lay continus and Staple fibers. The tension-regulating Godets enables high-speed production without loss of quality.

- Pre-feeding Godet for tension control
- Easy maintance and cleaning desing
- Up to 650 m/min laying speed



### MI-F TEXTURIZING UNIT

The texturizing unit is a specially designed forming method that gives the yarns a crimp and wave shape. Wavelength and intensity can be easily set from the user touch screen.

The transition between straight yarn and texturized yarn production is very practical and can be done in a short time.



### MI-ST STEAMING TUNNEL

It is a steaming tunnel that performs the Heat-set process of the product in a atmosferic pressurized environment.

Thanks to the steam circulation environment, the entire product undergoes homogeneous heat treatment. Tunnel lengths vary depending on product types and production objectives.

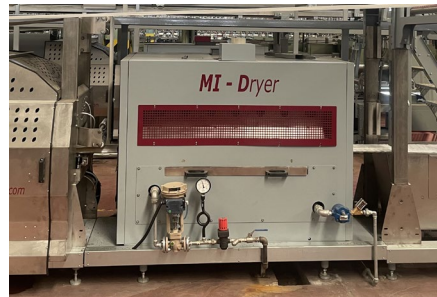
- Saturated Steam heat-Set Tunnel
- Tunnel lenght up to 3 sections
- Stainless steal belt (w 300mm)



Specially designed tunnels prevent the product from coming into direct contact with heat, thus preventing spoilage.

### MI-D DRYER

It is an optional unit that can be added to the machine configuration according to customer needs. In the heat-set process with saturated steam, the product naturally contains a certain amount of moisture. This dryer brings the product to the desired dryness.



### MI-CF COOLING FAN

After heat treatment, products need to be cooled to maintain their new form.

To achieve this in the best and most efficient way, these machines use high-efficiency radial fans.



### MI-A ACCUMULATOR

The accumulator is a crucial machine component for production. It is possible to obtain the highest production efficiency from the machine thanks to the accumulator. It also ensures minimal downtime in the tunnel section, guaranteeing a homogeneous production output.



- To obtain different machine sizes, the accumulator can be placed along the line, alongside the line, or on top of the heat-set chamber.
- Storage Length up to 15 meters, depending on production requirements.

### MI-W TAKE-UP WINDER

MITAS winders are specifically designed to wind heat-treated yarns into bobbins.

Because it can wind bobbins with the desired stiffness, it works flawlessly on all types of weaving and tufting looms.

Thanks to its fully automatic doffing feature, it enables high production with a low number of operators.



- winding 10-inch standard or conical bobbins.
- Up to 96 ends per section
- Left or right side configuration
- Fully automatic doffing
- Electrical yarn cutting
- Adjustable Winding stiffness setting
- Pre-feeding godets
- Yarn detectors for each end

## INSTALLED POWER

	Electric	Steam	Pressured air
MI-L Laying Unit	2 kva		
MI-F Texturizing unit	4 kva	1-8 kg/h	
MI-PS Pre-Steamer	7.5 kva	30 kg/h	
MI-ST Steaming Tunnel	24 kva	100 kg/h	0.5 Nm <sup>3</sup> /h
MI-D Dryer	3 kva	70 kg/h	
MI-CF Cooling Fan	0.5 kva		
MI-A Accumulator	5.5 kva		
MI-W Take-Up Winder	34 kva		8 Nm <sup>3</sup> /h

Note; The values given in this table are the **installed power**. The power consumption of the machine varies depending on the product being manufactured and the actual settings of the machine.

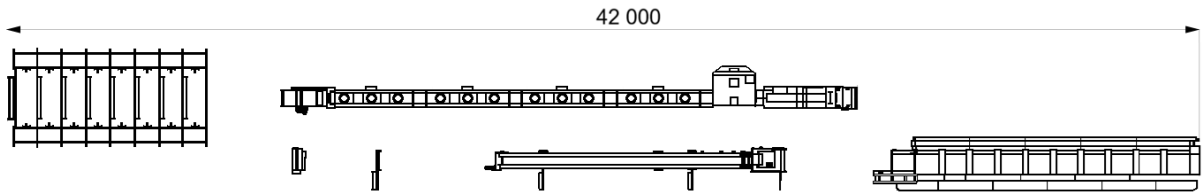
## PRODUCTION

	MI-ST60	MI-ST72	MI-ST96
12/2 Nm	5800 kg/ day	6900 kg/ day	9300 kg/day
10,5/2 Nm	5800 kg/ day	6900 kg/ day	9300 kg/day
24/3 Nm	5250 kg/ day	6300 kg/ day	8400 kg/day
27/3 Nm	4600 kg/ day	5500 kg/ day	7400 kg/day
30/3 Nm	4150 kg/ day	4950 kg/ day	6700 kg/day
40/3 Nm	3050 kg/ day	3670 kg/ day	4900 kg/day
50/3 Nm	2460 kg/ day	2950 kg/ day	4000 kg/day
60/3 Nm	2040 kg/ day	2440 kg/ day	3300 kg/day

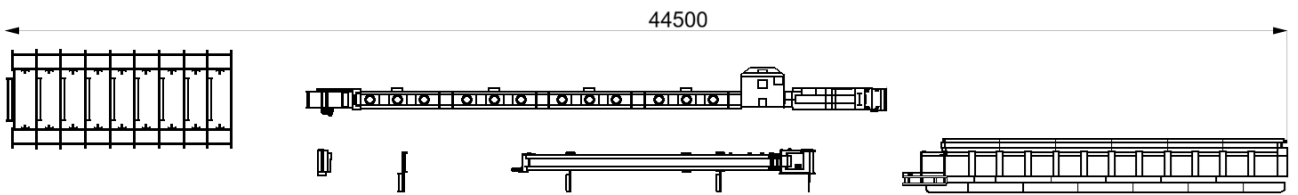
Note; The values in this table are calculated values. Calculations are based on 98% efficiency and standart operating conditions. Depending on different operating conditions and yarn quality, These production values may increase or decrease.

**DIMENSIONS;**

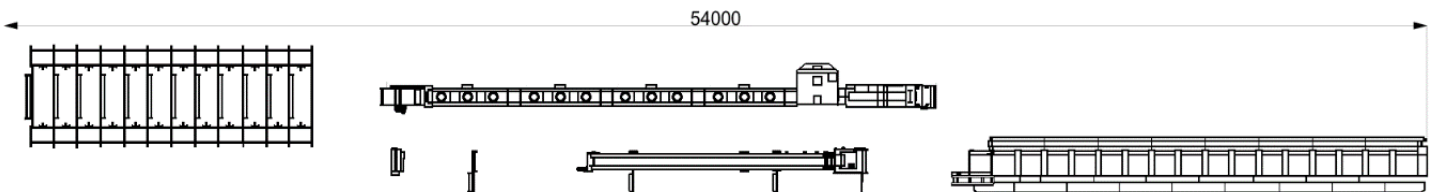
**MI-PAN60**



**MI-PAN72**



**MI-PAN96**



MI-PAN Series Steaming lines have a modular structure, making it possible to create various configurations. MİTAŞ Machine Inc. can produce different solutions according to customer needs and layout possibilities.